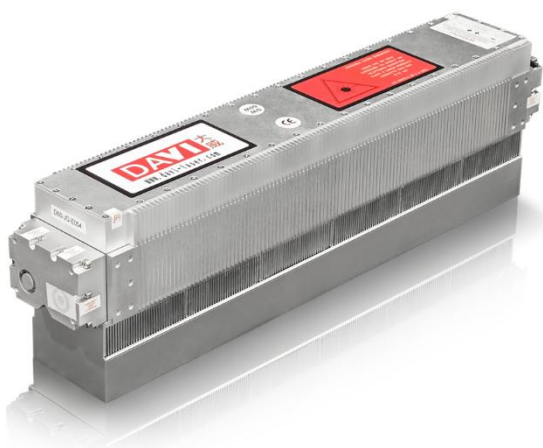


D60 Series RF CO₂ Lasers

The D60 series RF CO₂ lasers boasts high reliability, featuring a compact integrated design that combines the RF power supply with the laser cavity. It offers exceptional beam quality and power stability, with a laser wavelength range of 9.3 to 10.6 μm and can be configured for both air cooling and water cooling. These attributes make it the preferred choice for high-performance laser marking and engraving systems, while also incur very low operational and maintenance costs.

The D60 series RF CO₂ laser is an ideal solution for laser processing of various materials, including paper, plastic, wood, rubber, leather, and fabric etc.



Advantages:

- Excellent beam quality
- Stable power output
- Integrated design of RF power supply and laser cavity
- High reliability
- Both air and water cooling available
- Capable of high-quality laser processing on a variety of materials

Applications:

- Marking
- Engraving
- Cutting

Application Scenarios:



Silicone Strap
Marking



Wood Product
Marking



Paper Engraving



Denim products
Engraving

D60 Series Product Specifications

SPECIFICATIONS	MODEL	D60		GMIT60
	D60i			
Wavelength (μm)	9.3	10.2	10.6	10.6
Optical Output Power(W) ^①	≥ 40W	≥50W	≥ 60W	≥ 60W
Power Stability(%) ^{②③}		< ±5%		< ±4.5%
Mode Quality (M ²)		M ² < 1.2		M ² < 1.15
Beam Ellipticity		< 1.2:1		< 1.15:1
Beam Size (mm)		1.8±0.2		
Beam Divergence (mrad, full angle)		7.5±0.5		
Polarization		> 100:1		
Pulse Frequency (kHz)		0 ~ 25kHz		
Duty Cycle		0 ~ 100%		
Weight		10.2kg(Fan) / 8.8kg(Water)		
Dimensions(mm)		539.2 × 92 × 155.2(Fan) / 539.2 × 92 × 94.8(Water)		
Cooling		Fan / Water		
Heat Dissipation (W)		< 1200W		
Input Power				
DC Input Voltage (VDC)		48VDC		
DC Input Current(A) ^④		25A		
Environment Condition				
Maximum Case Temperature		< 55°C		
Temperature		5°C ~35°C		
Altitude		< 2000m		
Humidity		Non-Condensing		
Shipping/Storage Environment		-10°C~60°C, Non-Condensing		
Coolant				
Dynamic Coolant Flow Rate (l/min)		4L/min		
Coolant Maximum Static Pressure (kPa)		500kPa		
Coolant Setpoint Temperature Range		20°C - 30°C		
Hardness of water (CaCO ₃)		< 250mg/L		

The above specifications are subject to change without prior notice

Notes:

- ① Measured at 25°C and derated by 1%/°C for higher laser head temperatures
- ② Power Stability definition: $\pm (P_{max}-P_{min})/(2P_{max})$
- ③ Measured at constant duty cycle after 10 minutes laser out at operating condition
- ④ Measured at 10 kHz PRF and 100% duty cycle operation, maximum average input current